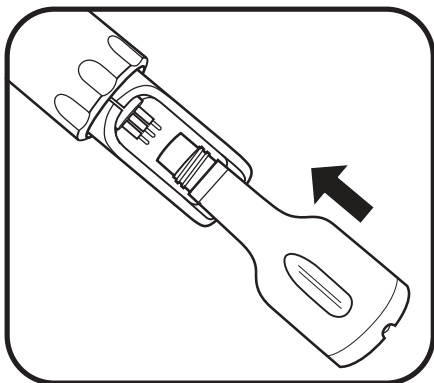


2.12 Connect Sonde USB

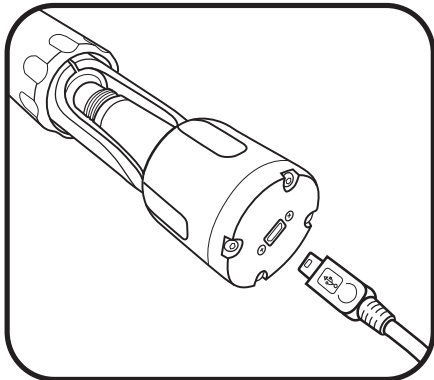
The USB signal output adapter (USB-SOA #599810) allows users to connect to an EXO sonde over a standard USB connection. Although the USB-SOA is rugged and water resistant, users should protect its connectors with the included cap when not in use. *The SOA should never be submerged.*

Prior to use, users must install KOR software and its drivers on the associated PC. The USB-SOA will not work without the drivers that accompany KOR.



1 Connect SOA to sonde.

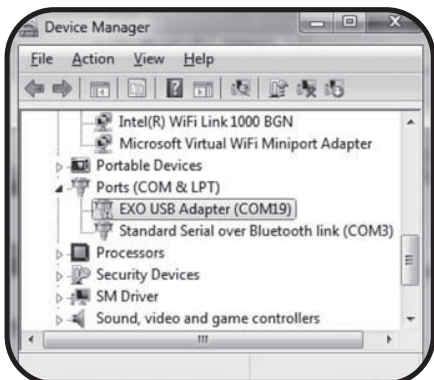
Remove the plug from the 6-pin connector on the sonde. Apply a light layer of Krytox grease to the male pins on the sonde and the female connector on the USB-SOA. Then align the connector's six pins and jackets, and press them firmly together so that no gap remains.



2 Connect USB cable to SOA and PC.

Remove the protective cap from the USB end of the SOA, and ensure that the connector is clean and dry. Then insert the small end of the provided USB cable into the SOA connector and the large, standard side into one of the PC's USB ports.

Attaching the adapter to the PC causes a new device to be recognized. Windows automatically installs the drivers and creates a new port. Each new adapter that is attached creates a new port.



Ports

KOR automatically scans ports for both USB adapters and Bluetooth. To view the USB adapter and its associated comm port, go to the Control Panel on your computer, click Device Manager, then click Ports.

Next, open KOR, go to connections, rescan and select the adapter from the list and click connect.

Distributed by:

Lab Unlimited
CARL STUART GROUP

Tallaght Business Park
Whitestown, Dublin 24,
Ireland
D24 RFK3

Tel: (01) 4523432
Fax: (01) 4523967
E-mail: info@labunlimited.com
Web: www.labunlimited.com

Quatro House, Frimley Road,
Camberley,
United Kingdom
GU16 7ER

Tel: 08452 30 40 30
Fax: 08452 30 50 30
E-mail: info@labunlimited.co.uk
Web: www.labunlimited.co.uk